



LINKÖPING



funkis



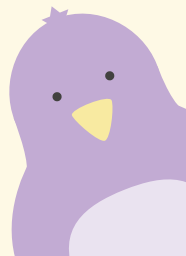
Linköpings
kommun



**Do you have a child aged 3-11
with a neuropsychiatric
condition (for example
autism, ADHD, Tourettes
syndrome or language
impairment)?**

**THEN KFUM FUNKIS IS FOR
YOU AND YOUR FAMILY!**

KFUM Funkis is a meeting place
for children 3-11 years old with
NPF and their families. The heart
of Funkis is the community center
with a play structure, cafe and
film room. We also arrange
sibling gatherings, lectures and
activities for the whole family.





★ Here you and your family can meet others in a similar situation. Families with children who are waiting for their diagnosis are also welcome.

The space is customized to be a calm environment with earth tones, the right lighting and plenty of visual support. Each play session is limited to 6 children.



Hours

KFUM Funkis will open in April 2019 and will be open afternoons, weekends and holidays.



Membership

On our website www.kfum-funkis.se you will find more information about how to become a member. This is also where you book a session at Funkis.

Cost

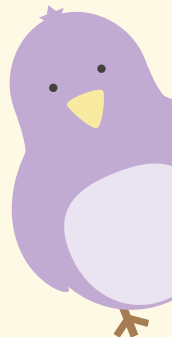


Membership costs 100 kr per child per year.



Address

KFUM Funkis
Lärdomsgatan 34
583 28 Linköping



Contact

Website: www.kfum-funkis.se
Email: info@kfum-funkis.se
Phone: 013-470 81 80

